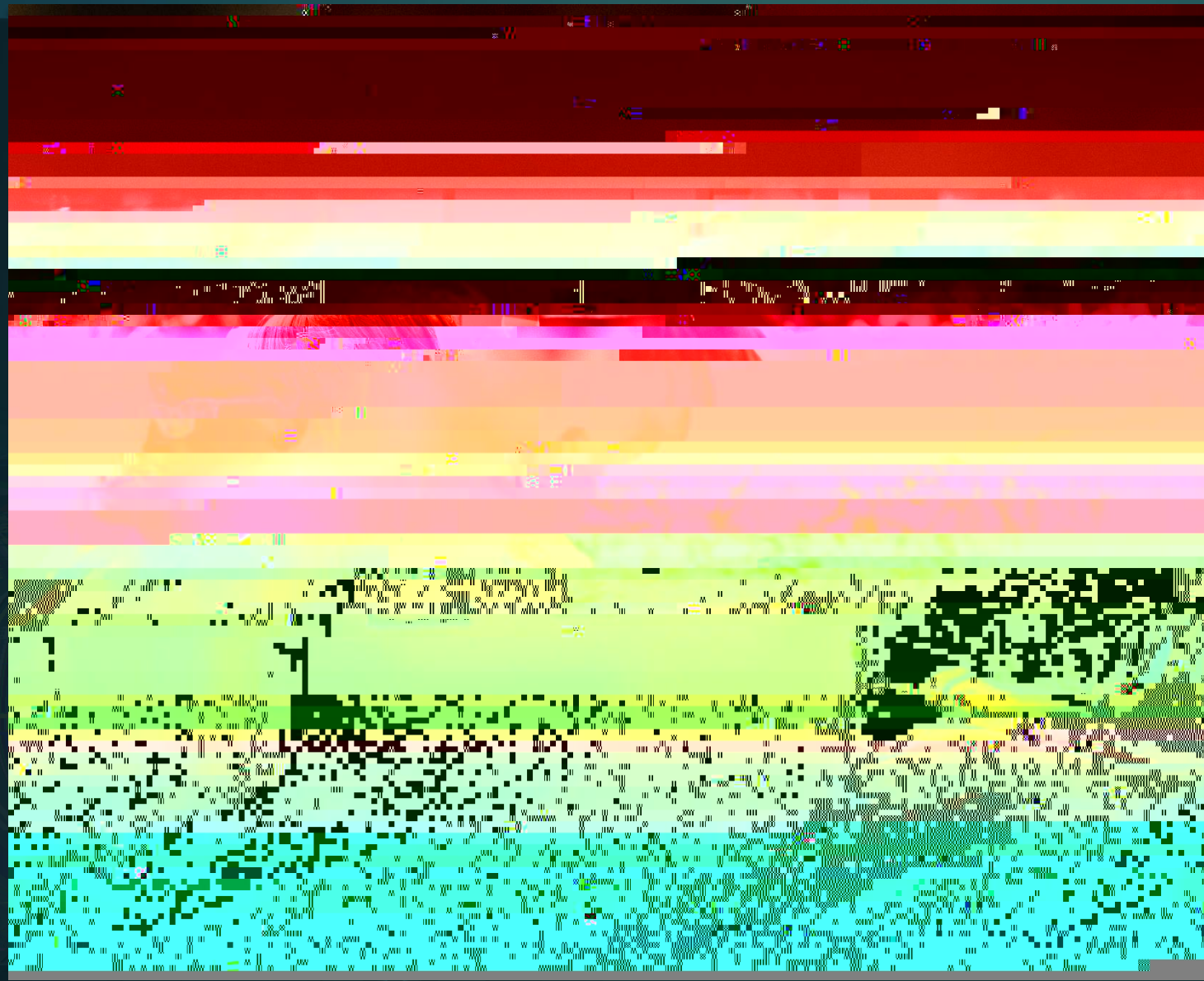


The Children's & Young Adults' Library and Learning Center at the ZLB, Berlin

BENJAMIN SCHEFFLER, ZENTRAL- UND LANDESBIBLIOTHEK BERLIN (GERMANY)



Berlin Central and Regional Library (ZLB), Germany



The C&YA
Library and
Learning Center
is a „third place“
for children and
teens.



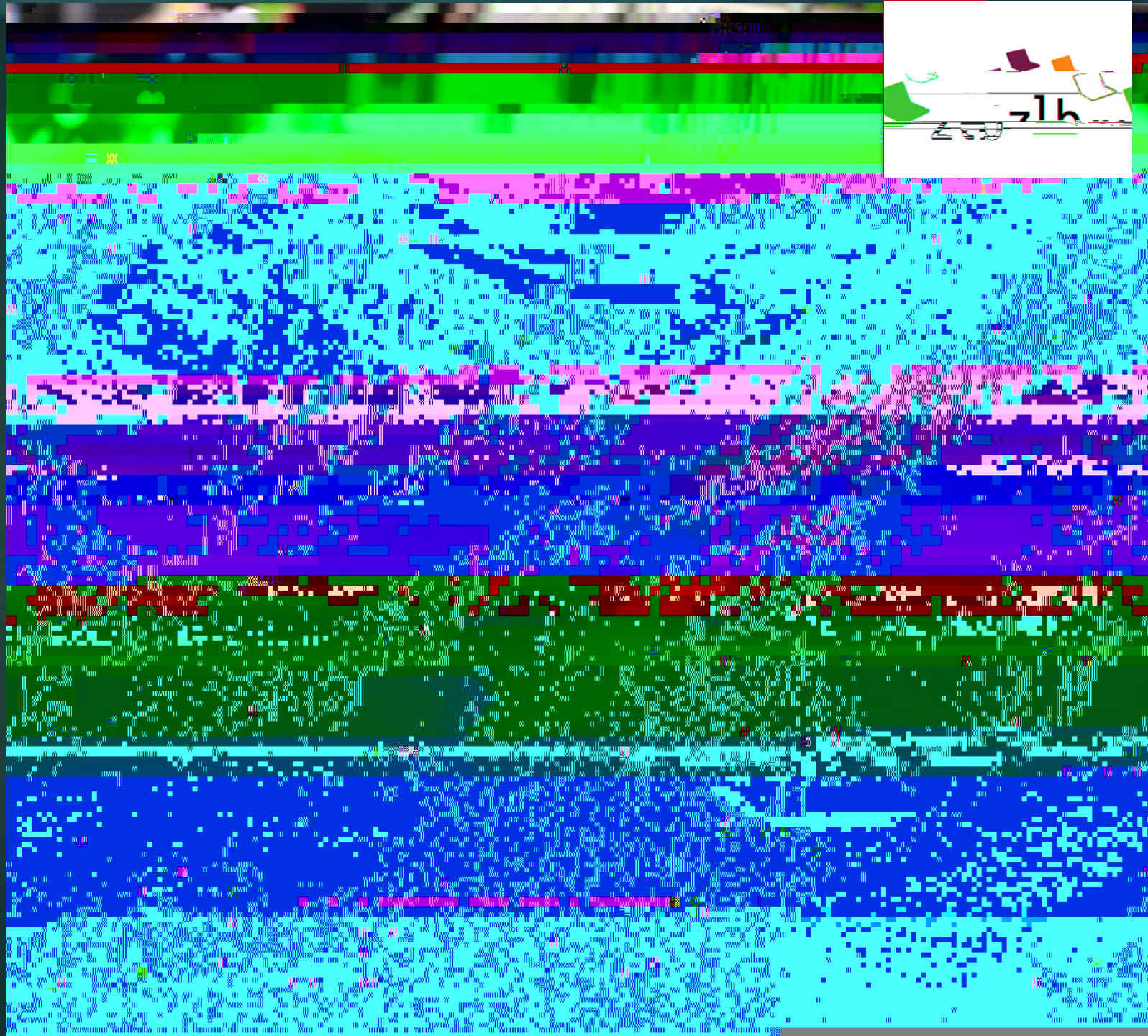
70.000 items on the shelves

Books, comics, mangas
and magazines

DVD, Blu Ray Discs, CD,
Tonies

E-books, digital
information ressources,
film and music streaming

Tablets and computers
with internet access and
office programs for
inhouse use





Programs and events at C&YA Library

Digital events on our [YouTube channel](#)

STEM activities

Coding & Gaming

DIY workshops

Reading events

Storytelling hours

Sign language reading hours for deaf children

Children-parents-courses



C&YA media for **recreational and leisure-time activities** as well as for **academic and scientific research**.

We offer about **165.000 media** items for C&YA in total.

As **legal depot library** we hold a sizeable archive with over 90.000 items, going back over 60 years.



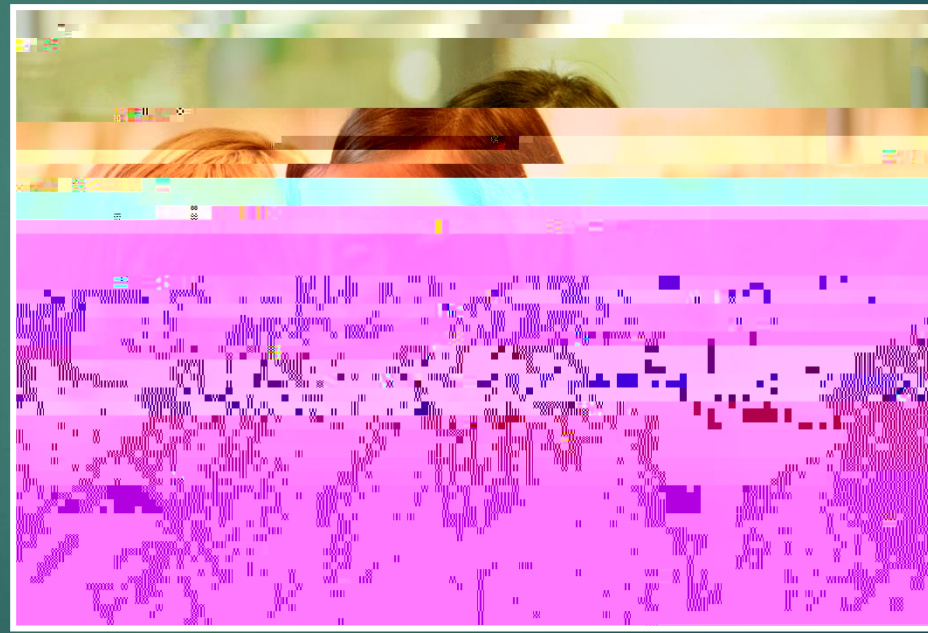
6 librarians and 8 FaMIs plus the **manager** form the team at the ZLB C&YA Library.

An **intern** stays for one year at a social program with us, usually right after finishing school.

Several **student interns and ZLB trainees** spend various lengths of time during the year at the library.



What do I like about my job?



My job responsibilities

Managing the library resources (staff, finance, media)

Setting goals according to our mission

Evaluating the success of the C&YA Library's strategy

Supporting team members taking new paths to achieve the agreed goals

Networking on local, national and international level



Thank you for your attention!

Contact

benjamin.scheffler@zlb.de

www.zlb.de/kijubi/

Copyrights:

Photos on slides nr. 1, 3, 4, 5: ZLB | Mo540 re6W /P #MC0(o-MC0(14zaa EMC e)- EM/Ola EMfC /P #MCID 1#BDC q.000014305 0 960 540 reW*ñBT/F 32.04 Tf1 0 0 1 6 102.62 Tm13mag01 G[s]-6(l)-4(i)-4(d)-J